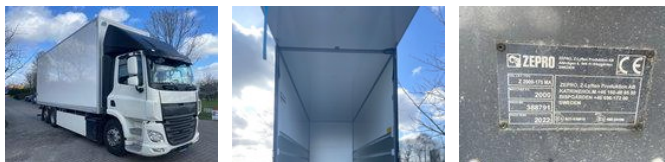


# DE KOKER BV

## DAF CF Emiss 100% electric 200 - 250km range battery SOH 98%

### General features

Brand	DAF
Model	CF
Subcategory	Box
Odometer reading	25.160km
Construction year	2022
Color	White
Condition	Used
Fuel	Electric
Emission class	Euro 6



### Characteristics

Empty weight	14.500kg
Load capacity	13.500kg

GVW

28.000kg

---

Cabin

No

# DAF CF E Moss 100% electric 200 - 250km range battery SOH 98%

## Technical specifications

Number of axes	3
Axis configuration	6x2
Transmission	Automatic
Engine output	400kw

## Accessories